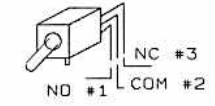
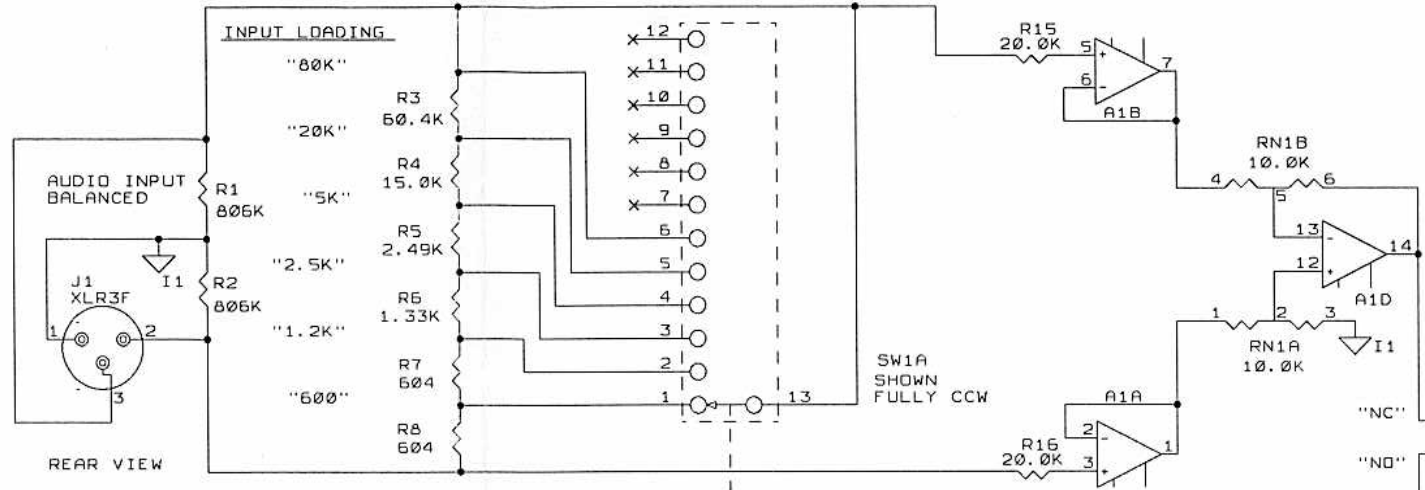


INPUT LOADING SELECT  
BALANCED

REFERENCE DESIGNATORS

- R1 - R17
- C1 - C10
- H1 - H2
- REG1 - REG2
- SW1 - SW2
- A1
- J1

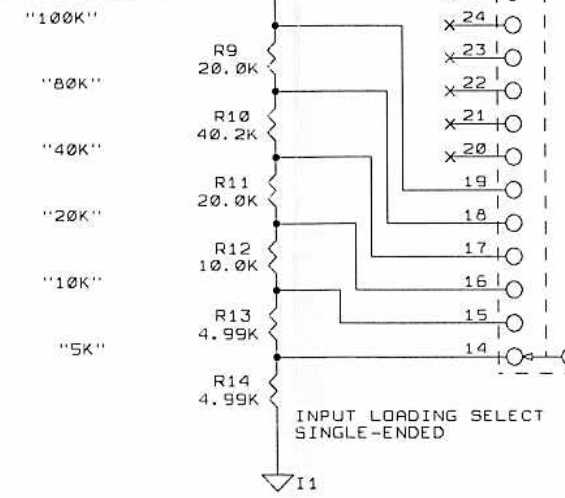


BAT POINTS TO BAL INPUT JACK  
WHEN SWITCH IS TOGGLED AS SHOWN.

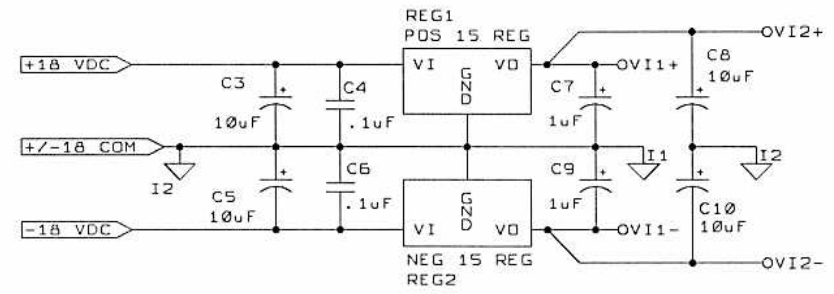
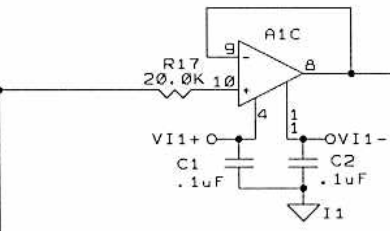
REAR VIEW

AUDIO INPUT  
SINGLE-ENDED  
FROM RCA BOARD

INPUT LOADING



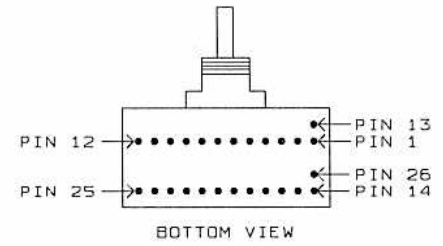
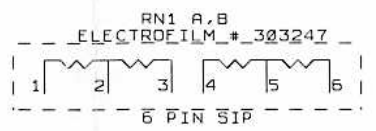
INPUT LOADING SELECT  
SINGLE-ENDED



FILTER BOARD  
INPUT SECTION

ORCAD IV FLAT FILE LINK

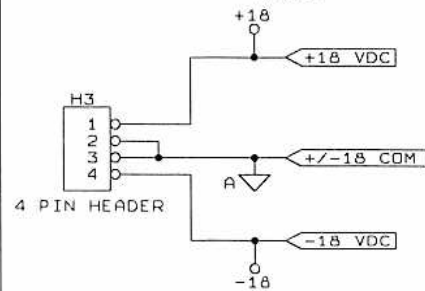
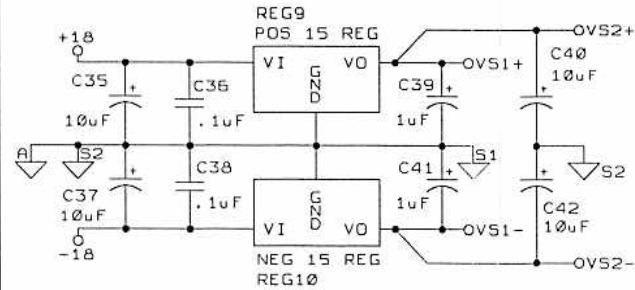
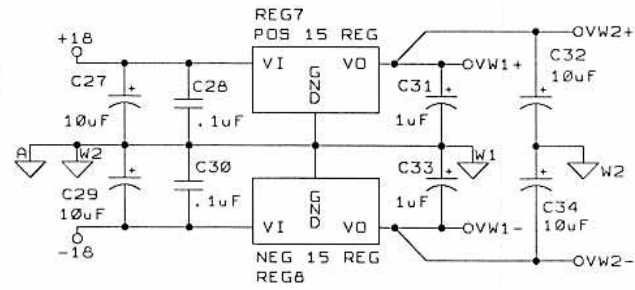
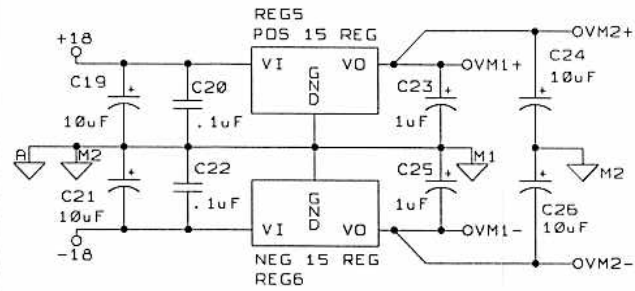
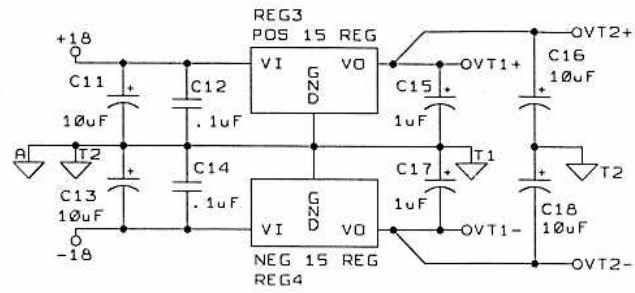
ILINK  
IAPGR062B.SCH  
IAPGR063B.SCH



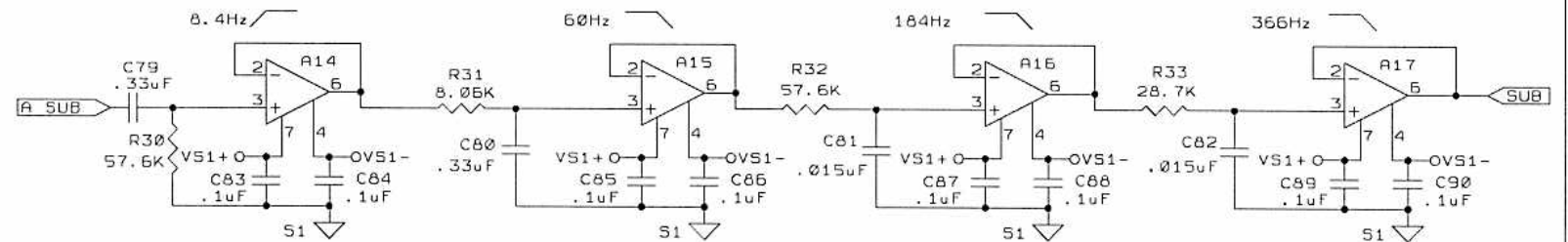
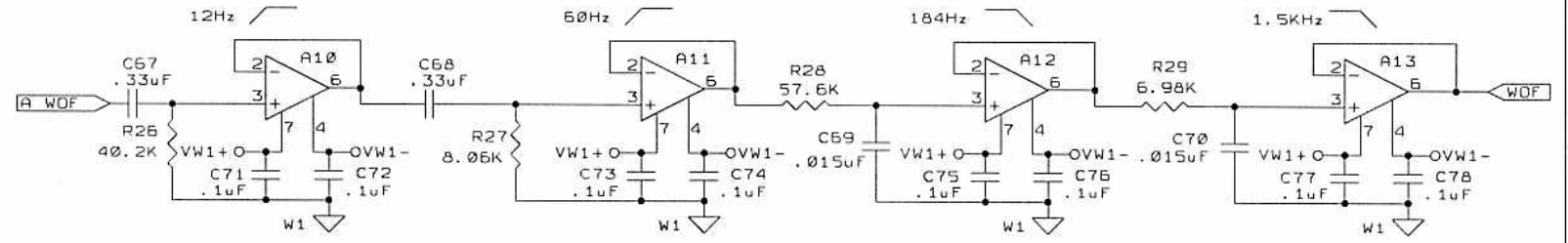
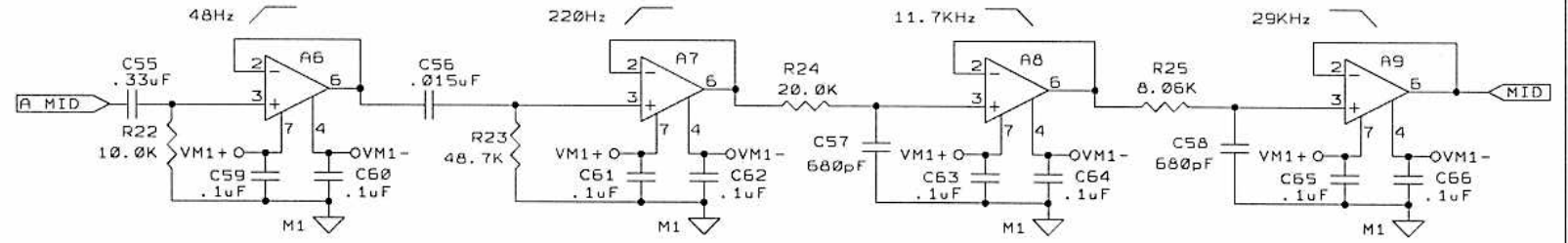
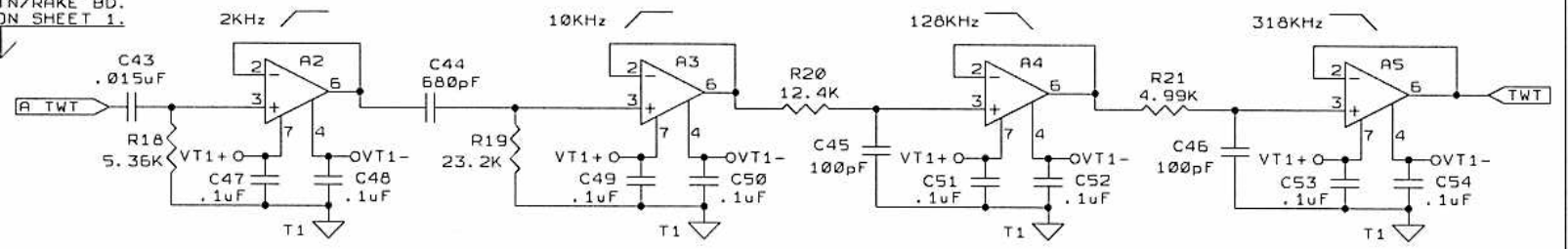
SW1 ELECTROSWITCH (APOGEE) # 75-4218  
.625" SHAFT - FROM MOUNTING SURFACE  
ADJUSTABLE; 2-12 POSITIONS.

WHEN SHAFT IS ROTATED  
FULLY CCW, PIN 13 COM IS CONNECTED  
TO PIN 1

APOGEE ACOUSTICS INC.		
ASSY-350-0002-000 REV B		
PCB-413-0003-000 REV B		
Title GRAND DAX - FILTER BOARD		
Size	Document Number	REV
B	IAPGR061B.SCH drawn by jer	B
Date:	February 11, 1992	Sheet 1 of 3



FROM ATTN/RAKE BD.  
VIA H1 ON SHEET 1.



REFERENCE DESIGNATORS

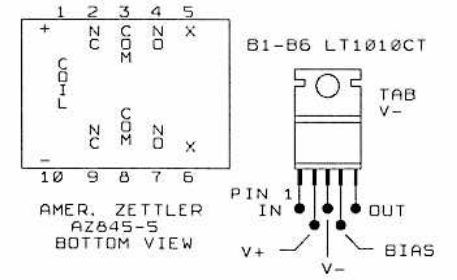
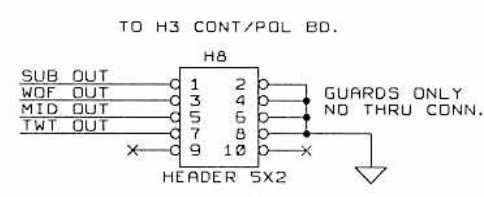
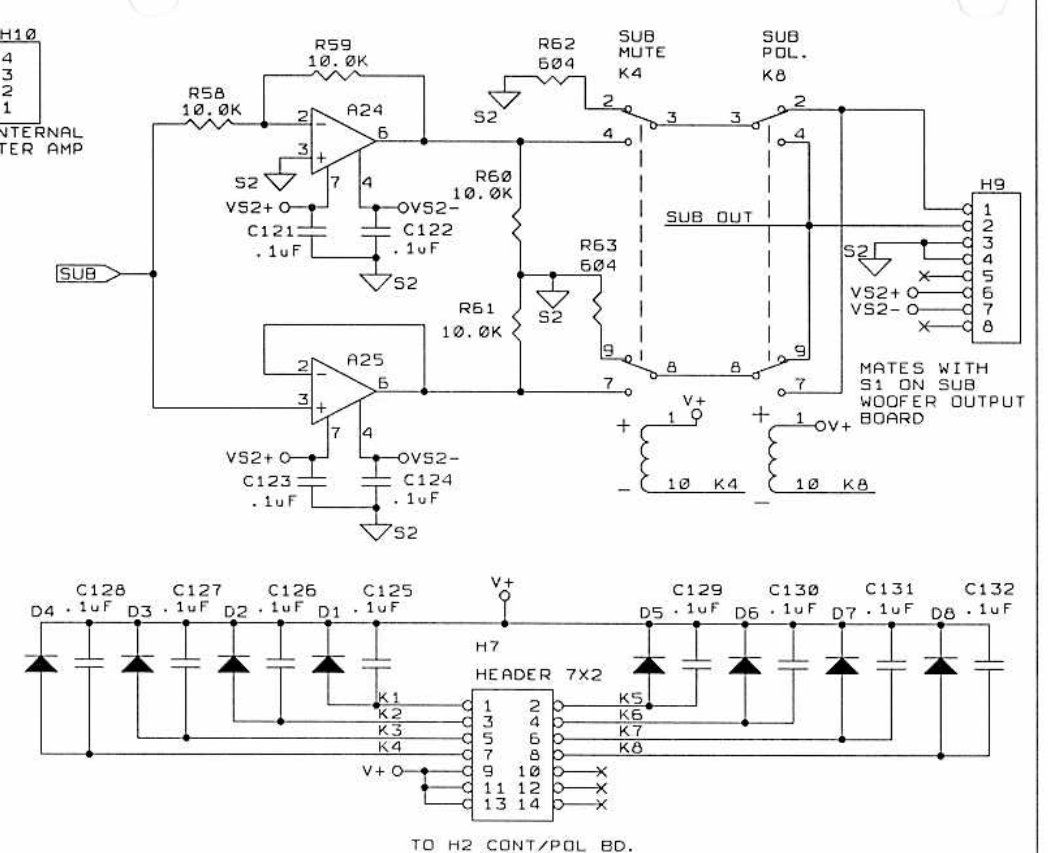
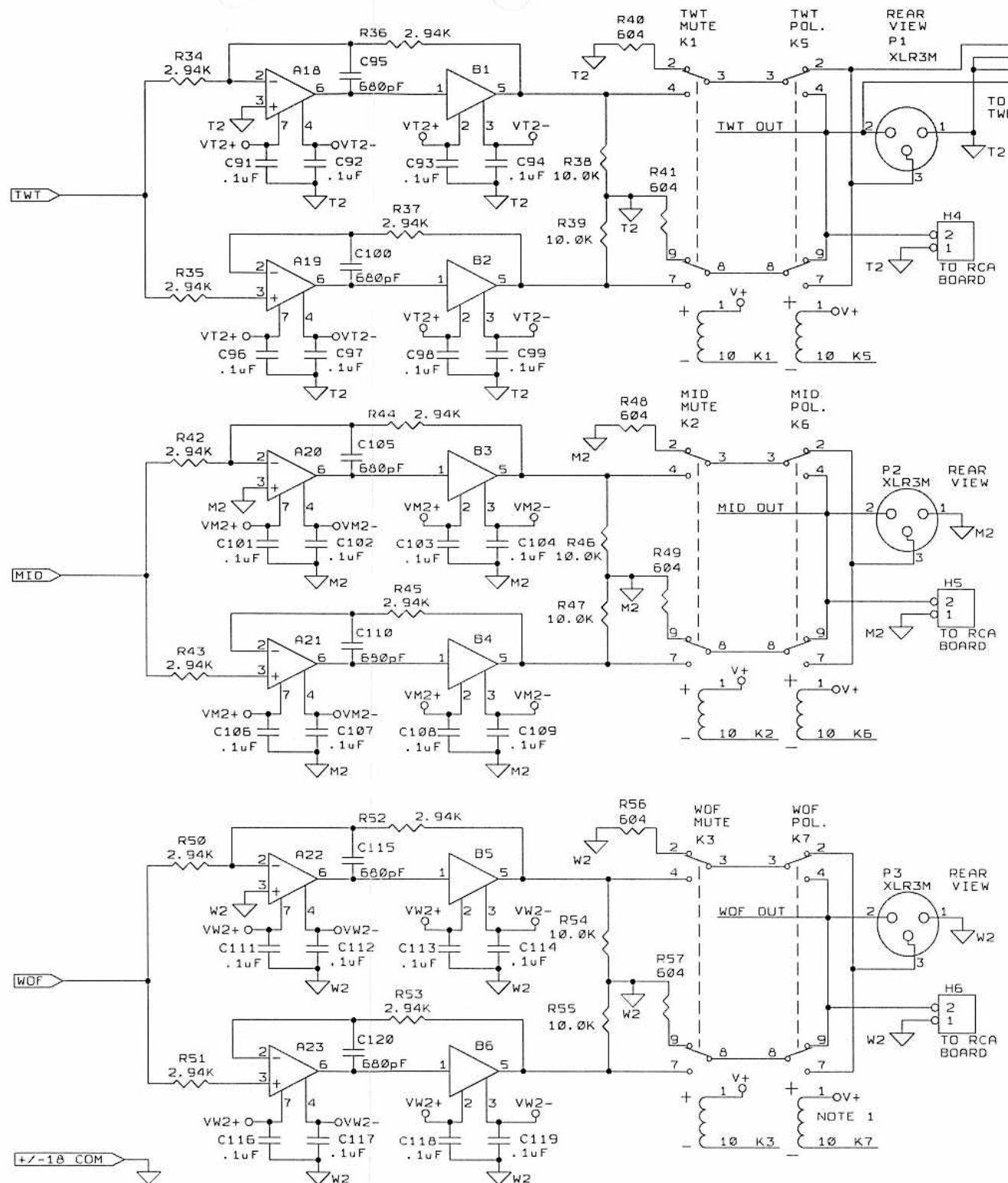
REG3 - REG10  
C11 - C90  
H3  
R18 - R33  
A2 - A17

NOTES:

- OPA606KP PIN1,5 = OFFSET TRIM - LEAVE OPEN.  
PIN 8 = NO CONNECT.

FILTER BOARD  
FILTER SECTION

APOGEE ACOUSTICS INC.		
Title GRAND DAX - FILTER BOARD		
Size B	Document Number APGR062B.SCH	REV B
Date: February 11, 1992	Sheet 2 of 3	drawn by je



- NOTES:
1. WOOFER SECTION OUTPUT SIGNAL IS INVERTED RELATIVE TO OTHER CHANNELS. THIS IS ACCOMPLISHED THROUGH PROGRAM CONTROL OF K7 RELAY.
  2. OPA606KP PIN 1,5,8 = NC
  3. REFERENCE DESIGNATORS
- P1 - P3  
 H4 - H10  
 A18 - A25  
 B1 - B6  
 K1 - K8  
 R34 - R63  
 C91 - C132  
 D1 - D8

### FILTER BOARD OUTPUT SECTION

APOGEE ACOUSTICS INC.		
Title GRAND DAX - FILTER BOARD		
Size B	Document Number APGR063B.SCH	REV B
Date: February 11, 1992	Sheet 3 of 3	drawn by jer

## GRAND DAX - FILTER BOARD

ASSY-350-0002-000 REV B

B.O.M.

THIS FILE:      AWORKS - APGR060B.doc   11-FEB-92  
                   ASCCI  - APGR060B.bom   11-FEB-92

FROM ORCAD FILE: APGR061B.SCH   INPUT (ROOT SHEET) 11-FEB-92  
                   APGR062B.SCH   FILTERS  
                   APGR063B.SCH   OUTPUT

\* INDICATES CHANGED OR ADDED TO SINCE 12-NOV-91, 09-JAN-92 AND 16-JAN-92

1	1	A1	OPAMP BURR BROWN # OPA404KP SOLE SOURCE 14 PIN 300 MIL DIP
2	24	A2,A3,A4,A5,A6,A7,A8,A9, A10,A11,A12,A13,A14,A15, A16,A17,A18,A19,A20,A21, A22,A23,A24,A25	OPA606KP OPAMP BURR BROWN # OPA606KP SOLE SOURCE 8 PIN 300 MIL DIP
3	6	B1,B2,B3,B4,B5,B6	POWER BUFFER LINEAR TECHNOLOGY # LT1010CT SOLE SRC TO-220 5 LEAD
3a	8	D1,D2,D3,D4,D5,D,D7,D8	DIODE - GENERIC 1N4148
4	80	C1,C2,C4,C6,C12,C14,C20, C22,C28,C30,C36,C38,C47, C48,C49,C50,C51,C52,C53, C54,C59,C60,C61,C62,C63, C64,C65,C66,C71,C72,C73, C74,C75,C76,C77,C78,C83, C84,C85,C86,C87,C88,C89, C90,C91,C92,C93,C94,C96, C97,C98,C99,C101,C102, C103,C104,C106,C107,C108, C109,C111,C112,C113,C114, C116,C117,C118,C119,C121, C122,C123,C124,C125,C126, C127,C128,C129,C130,C131, C132	.1uF 50WVDC +/-20% CERAMIC Z5U AVX # SR205E 104 MAA MEPCO # CZ20C 104 M RADIAL .2W x .2H x .125T x .020LD x .1LS

---

5	20	C3, C5, C8, C10, C11, C13, C16, C18, C19, C21, C24, C26, C27, C29, C32, C34, C35, C37, C40, C42	10uF 35WVDC 10% TANT SPRG # 150D106X9035R2 MLRY # CS13BF106K AXIAL .289D X .822L X .025LD 1.10" CTRS/BD
5a	10	C7, C9, C15, C17 C23, C25, C31, C33 C39, C41	1uF 35WVDC 10% TANT SPRG # 150D105X9035A2 MLRY # CS13BF105K AXIAL .135D X .422L X .020LD .600 BD/CTRS
6	6	C43, C56, C69, C70, C81, C82	.015uF 100WVDC 1% POLYPRO REL-CAP # PPMT153G1A SOLE SOURCE AXIAL .190D X .438L X .020LD .600 CENTERS/BOARD
7	9	C44, C57, C58, C95, C100, C105, C110, C115, C120	680pF 100VDC 2.5% POLYPRO ERO # KP 1830-168/013 SOLE SRC RAD .283W X .236H X .177T X .020LD X .20OLS .2 CTRS/BD
8	2	C45, C46	100pF 100WVDC 2.5% POLYPRO ERO # KP 1830-110/013 SOLE SRC RAD .283W X .236H X .177T X .020LD X .20OLS .2 CTRS/BD
9	5	C55, C67, C68, C79, C80	.33uF 100WVDC 1% POLYPRO REL-CAP # PPMT334G1A

---

SOLE SOURCE  
 AXIAL .260D X .680L X .025LD  
 1.00" CENTERS/BOARD

10	1	H1	HEADER 15X2 STRAIGHT PINS LATCH EJECT 3M # 3440-6202 .100 X .100 - .025 SQ. PINS
11	1	H3	4 PIN HEADER RIGHT ANGLE POL/FRIC. LOCK MOLEX # 26-61-5040 .156 CNTRS - .045 SQ. PINS
12	1	H8	HEADER 5X2 STRAIGHT PINS LATCH EJECT 3M # 3662-6202 .100 X .100 - .025 SQ. PINS
12a	4	H2, H4, H5, H6	2 PIN HEADER STRAIGHT PINS POL/FRIC. LOCK MOLEX # 22-11-2022 .100 CNTRS - .025 SQ. PINS
13	1	H7	HEADER 7X2 STRAIGHT PINS LATCH EJECT 3M # 3314-6202 .100 X .100 - .025 SQ. PINS
* 14	1	H9	8 PIN HEADER SINGLE ROW BOARD TO BOARD SAMTEC # TSW-108-15-H-S .100 CNTRS - .025 SQ. PINS
* 14a	1	H10	4 PIN HEADER STRAIGHT PINS POL/FRIC. LOCK MOLEX # 22-11-2042 .100 CNTRS - .025 SQ. PINS

15	1	J1	XLR3F FEMALE XLR BLK/GOLD/PC MT. NEUTRIK # NC3FDH-B-0 SOLE SRC
16	ITEM 16 NOT USED		
17	8	K1,K2,K3,K4,K5,K6,K7,K8	DPDT RELAY AMERICAN ZETTLER # AZ-845-5 OMRON # 10 PIN 300 MIL DIP
18	3	P1,P2,P3	XLR3M MALE XLR BLK/GOLD/PC MT. NEUTRIK # NC3MDH-B-0 SOLE SRC
* 19	2	R1,R2	806K 1/4 WATT 1% METAL FILM DALE # RN-60D SOLE SOURCE AXIAL .390L X .140D X .025LD .600" CTRS/BOARD
20	1	R3	60.4K 1/4 WATT 1% METAL FILM DALE # RN-60D SOLE SOURCE AXIAL .390L X .140D X .025LD .600" CTRS/BOARD
21	1	R4	15.0K 1/4 WATT 1% METAL FILM DALE # RN-60D SOLE SOURCE AXIAL .390L X .140D X .025LD .600" CTRS/BOARD
22	1	R5	2.49K 1/4 WATT 1% METAL FILM

DALE # RN-60D  
 SOLE SOURCE  
 AXIAL .390L X .140D X .025LD  
 .600" CTRS/BOARD

---

23	1	R6	1.33K 1/4 WATT 1% METAL FILM DALE # RN-60D SOLE SOURCE AXIAL .390L X .140D X .025LD .600" CTRS/BOARD
----	---	----	--

---

24	10	R7,R8,R40,R41,R48,R49, R56,R57,R62,R63	604 1/4 WATT 1% METAL FILM DALE # RN-60D SOLE SOURCE AXIAL .390L X .140D X .025LD .600" CTRS/BOARD
----	----	---	--

---

25	6	R9,R11,R15,R16,R17,R24	20.0K 1/4 WATT 1% METAL FILM DALE # RN-60D SOLE SOURCE AXIAL .390L X .140D X .025LD .600" CTRS/BOARD
----	---	------------------------	--

---

26	2	R10,R26	40.2K 1/4 WATT 1% METAL FILM DALE # RN-60D SOLE SOURCE AXIAL .390L X .140D X .025LD .600" CTRS/BOARD
----	---	---------	--

---

27	12	R12,R22R38,R39,R46,R47, R54,R55,R58,R59,R60,R61	10.0K 1/4 WATT 1% METAL FILM DALE # RN-60D SOLE SOURCE AXIAL .390L X .140D X .025LD .600" CTRS/BOARD
----	----	--	--

---

28	3	R13,R14,R21	4.99K 1/4 WATT 1% METAL FILM
----	---	-------------	------------------------------------



.600" CTRS/BOARD

---

 36 ITEM 36 NOT USED
 

---

 37 3 R28,R30,R32 57.6K  
 1/4 WATT 1%  
 METAL FILM  
 DALE # RN-60D  
 SOLE SOURCE  
 AXIAL .390L X .140L X .025LD  
 .600" CTRS/BOARD
 

---

 38 1 R29 6.98K  
 1/4 WATT 1%  
 METAL FILM  
 DALE # RN-60D  
 SOLE SOURCE  
 AXIAL .390L X .140L X .025LD  
 .600" CTRS/BOARD
 

---

 39 1 R33 28.7K  
 1/4 WATT 1%  
 METAL FILM  
 DALE # RN-60D  
 SOLE SOURCE  
 AXIAL .390L X .140L X .025LD  
 .600" CTRS/BOARD
 

---

 40 12 R34,R35,R36,R37,R42,R43,  
 R44,R45,R50,R51,R52,R53 2.94K  
 1/4 WATT 1%  
 METAL FILM  
 DALE # RN-60D  
 SOLE SOURCE  
 AXIAL .390L X .140L X .025LD  
 .600" CTRS/BOARD
 

---

 41 5 REG1,REG3,REG5,REG7,REG9 POS 15 REG  
 NATL # LM340AT-15  
 TO-220  
 NO HEAT SINK
 

---

 42 5 REG2,REG4,REG6,REG8,  
 REG10 NEG 15 REG  
 NATL # LM320T-15  
 TO-220  
 NO HEAT SINK
 

---

43	1	RN1	10.0K RESISTOR NETWORK 4 RESISTORS ELECTROFILM # 303247 SOLE SRC 6 PIN SIP
44	1	SW1	ROTARY SW ELECTROSWITCH/APOGEE # 75-4218 (.625 SHAFT FMS) 2-12 POS. 2 DECKS ONE POLE/DECK
45	1	SW2	SPDT RIGHT ANGLE PC MOUNT AUGAT/ALCO # MTM106DVRA
* 46	1	PC1	PRINTED CIRCUIT BOARD APOGEE # PCB-413-0003-000 REV B