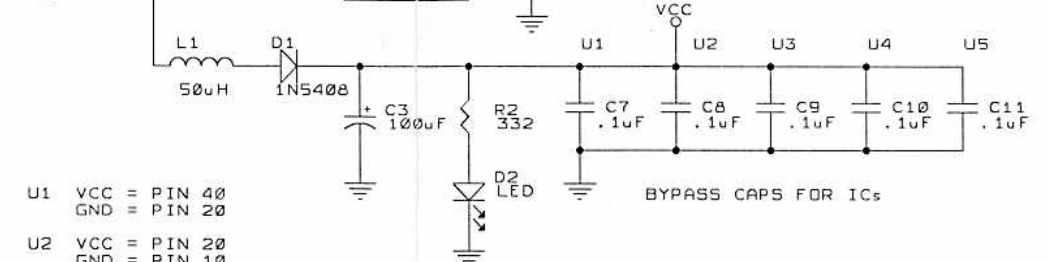
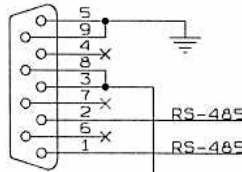
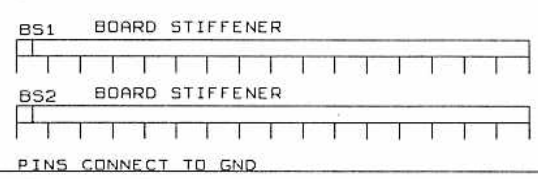


TO PWR DIST. BD. H1
VIA. PANEL CONN.

P1
DB9 MALE PC MOUNT



- U1 VCC = PIN 40
GND = PIN 20
- U2 VCC = PIN 20
GND = PIN 10
- U3 VCC = PIN 28
GND = PIN 14
- U4 VCC = PIN 24
GND = PIN 12
- U5 VCC = PIN 8
GND = PIN 5



THIS DOCUMENT CONTAINS PROPRIETARY INFORMATION WHICH SHALL NOT BE REPRODUCED, TRANSFERRED TO OTHER DOCUMENTS, DISCLOSED TO OTHERS, USED FOR MANUFACTURING OR ANY OTHER PURPOSE WITHOUT PRIOR WRITTEN PERMISSION OF APOGEE ACOUSTICS.

USER INTERFACE BOARD

APOGEE ACOUSTICS INC.			
Title GRAND DAX - USER INTERFACE BOARD			
Size	Document Number	REV	
B	APGRUSER.SCH revised by Jer	1	
Date:	January 2, 1992	Sheet	1 of 1

GRAND DAX - USER INTERFACE BOARD

*ASSY-350-0008-000 REV 01

B.O.M.

THIS PRINTING: 2-JAN-92

THIS FILE: AWORKS - APGRUSER.doc 02-JAN-92
ASCCI - APGRUSER.bom 02-JAN-92

FROM ORCAD FILE: APGRUSER.SCH 02-JAN-92

* INDICATES A CHANGE FROM 22-DEC-91 PRINTING

Item Quantity Reference Part

1	2	C1,C2	18pF 100VDC +/-10% CERAMIC NPO AVX # SR15 1A 180 KAA RADIAL .15W X .15H X .10T X .020LD X .1LS
2	1	C3	100uF 10WVDC 10% TANT SPRG # 150D107X9010R2 MLRY # CS13BC107K AXIAL .289D X .822L X .025LD 1.10" CTRS/BD
		ALTERNATE	10WVDC 10% TANT NEMCO # TB 100/10K 250 MALLORY # TDC107K010WSG KEMET # T354G107K10AS AVX # TAP107K010HSB RADIAL .350D (max) X .650H (max) X .02LD X .250LS .250 CTRS/BD
3	1	C4	10uF 25WVDC TANT SPRG # 199D106X0025CA1 RADIAL .216D X .360H X .025LD .100" CTRS/BD
* 4	7	C5,C6,C7,C8,C9,C10,C11	.1uF 50WVDC +/-20%

CERAMIC Z5U
 AVX # SR205E 104 MAA
 MEPCO # CZ20C 104 M
 RADIAL .2W x .2H x .125T x
 .020LD x .1LS

5	1	D1	1N5408 DIODE GENERIC DO-201AD PKG AXIAL .375L X .210DIA X .050LD .750 CTRS/BD
6	1	D2	LED ANY COLOR T 1-3/4 MOUNTED ON PC BOARD INTERNALLY
7	1	H1	CONNECTOR 16 PIN SAMTEC # TST-1-8-02-H-D 2 X 8 .100" CTRS .025 SQ. PINS
8	1	H2	3 PIN HEADER RIGHT ANGLE POL/FRIC LOCK MOLEX # 22-12-2034 .100 CNTRS .025 SQ. PINS
9	1	H3	HEADER 3 PIN SAMTEC # TSW-103-07-H-S .1" CTRS .025 SQ. PINS
10	1	JMP1	.1" JUMPER SAMTEC # SNT-100-BK-H-H
11	1	L1	50uH 10% MILLER # 5504 RADIAL 1.12W X .81H X .81T X .75LS X .042 LD
12	1	P1	DB9 MALE PC MOUNT .318 FOOTPRINT METAL SHELL AMP # 747840-4 WITH BOARDLOCKS

13	1	R1	100K 1/4 WATT 1% METAL FILM DALE # RN-60D SOLE SOURCE AXIAL .390L X .140D X .025LD .600" CTRS/BOARD
----	---	----	---

14	1	R2	332 1/4 WATT 1% METAL FILM DALE # RN-60D SOLE SOURCE AXIAL .390L X .140D X .025LD .600" CTRS/BOARD
----	---	----	--

15	1	R3	10K 1/4 WATT 1% METAL FILM DALE # RN-60D SOLE SOURCE AXIAL .390L X .140D X .025LD .600" CTRS/BOARD
----	---	----	--

16	1	SOC1	28 PIN 600 MIL DIP IC SOCKET AUGAT # 528-AG10D USE ON U3
----	---	------	--

17	1	SOC2	24 PIN 600 MIL DIP IC SOCKET AUGAT # 524-AG10D USE ON U4
----	---	------	--

18	1	SW1	SPDT TOGGLE SW RIGHT ANGLE PC MOUNT AUGAT/ALCO # AE101SD1AB
----	---	-----	--

19	1	U1	80C51 MICROPROCESSOR SIGNETICS # 87C51-CCN40 40 X 600 MIL DIP NO SOCKET
----	---	----	---

20	1	U2	74HC373 TRI-STATE OCTAL D LATCH GENERIC 20 X 300 MIL DIP
----	---	----	--

21	1	U3	27C256 PROGRAM MEMORY SIGNETICS # 27C256-200 LATTICE, AMD, NEC 28 X 600 MIL DIP
----	---	----	---

22	1	U4	DS1220AD NV-RAM DALLAS SEMICONDUCTOR # DS1220AD-200 24 X 600 MIL DIP
----	---	----	--

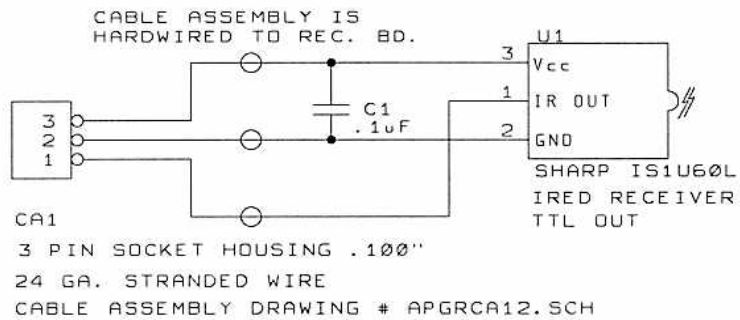
23	1	U5	75176 RS-485 TRANSCEIVER TI # SN75176B 8 X 300 MIL DIP
----	---	----	---

24	1	Y1	11.059MHz QUARTZ CRYSTAL FOX # HC49S DIGI-KEY # X426 RADIAL .4W X .15H X .183T X .192LS X .019LD .2 CTRS/BD
----	---	----	---

* 25	2	BS1,BS2	BOARD STIFFENER ROGERS # B250-16-0.5 2 WEEK LEAD TIME ASK FOR KIM (602)-967-0624 17 PINS, .5 CENTERS, .070 HOLES
------	---	---------	--

* 26	1	PC1	USER INTERFACE PRINTED CIRCUIT BOARD APOGEE # PCB-413-0008-000 REV 01
------	---	-----	---

TO/FROM H2
USER INTERFACE BD.



RECEIVER MOUNTING BOARD

APOGEE ACOUSTICS INC.

Title

GRAND DAX - RECEIVER MOUNTING BD.

Size Document Number

A APGRREC.SCH

drawn by jer

REV

1

Date: January 6, 1992 Sheet 1 of 1

GRAND DAX - RECEIVER MOUNTING BOARD REV 01

ASSY-_____ REV 01

B.O.M.

THIS FILE: AWORKS - APGRREC.doc 06-JAN-92

FROM ORCAD FILE: APGRREC.SCH 06-JAN-92

Item	Quantity	Reference	Part
1	1	U1	IREC RECEIVER SHARP # IS1U60L
2	2	C1	.1uF 50WVDC +/-20% CERAMIC Z5U AVX # SR205E 104 MAA MEPCO # CZ20C 104 M RADIAL .2W x .2H x .125T x .020LD x .1LS
3	1	CA1	CABLE ASSEMBLY DRWG. # APGRCA12.SCH 3 PIN SOCKET HOUSING .100" 24 GA. WIRE
4	1	PC1	RECEIVER MOUNTING PRINTED CIRCUIT BOARD APOGEE # PCB-413-0008-100 REV 01